



tag

estate agents



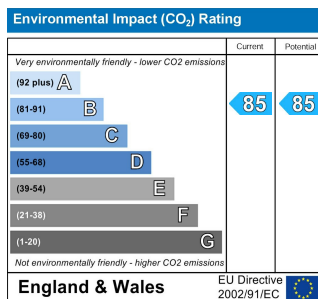
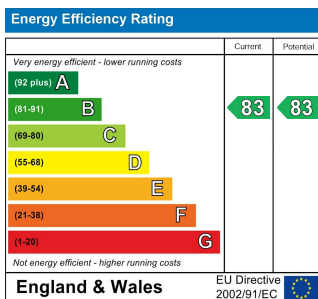
Apartment 3 Rose Court, Tewkesbury, Gloucestershire GL20 5UJ £238,975

Tewkesbury: The Ancient Grudge, 15 High Street, Tewkesbury, GL20 5AL. Tel. 01684 275276 Fax. 01684 276661
Walton Cardiff: 4 Columbine Road, Walton Cardiff, Tewkesbury, GL20 7SP. Tel. 01684 295417 Fax. 01684 851780

www.tagestateagents.co.uk | info@tagestateagents.co.uk



TAG Estate Agents Limited. Registered in England No. 05783875
Registered Office: Goodridge Court, Goodridge Avenue, Gloucester, GL2 5EN



Situation

Rose Court is situated in the heart of the historic market town of Tewkesbury and is centrally located between Cheltenham, Evesham and Worcester close to the M5.

In addition to a wide range of shops, the town centre has many stunning Tudor buildings and a wealth of leisure, health, educational and arts facilities, including schools (pre-school, primary and secondary), theatre, hospital, swimming pool, library and supermarkets, whilst its close proximity to the motorway and railway station provide easy access to the rest of the country.

PROPERTY SUMMARY

- Luxury Ground Floor Apartment
- Living Room
- Bespoke Kitchen Dining Room
- Two Double Bedrooms
- En Suite Shower Room
- Bathroom
- Lift
- Communal Gardens
- Secure Parking Space
- Video Entry Access



Description

BRAND NEW and INDIVIDUALLY DESIGNED. Rose Court is set within a secure gated development in the heart of Tewkesbury. What used to be Tewkesbury Courthouse, has now been transformed into the exclusive Rose Court development. The apartments overlook beautifully landscaped communal gardens, the glorious Tewkesbury Abbey, Tewkesbury Cricket Ground and the River Swilgate.

Each home has been individually designed and created, the development also has landscaped communal gardens & private parking.

These beautifully designed 1 & 2 Bedroom apartments come with high specification Kitchens, with a broad range of modern appliances including double ovens, hob, Glass Extractor Hoods. Washing Machine, Fridge Freezer & Dishwasher.

Fully tiled bathrooms & en-suites, with contemporary white fixtures that include shower units with power showers and mosaic marble features.

Any potential owner will have the security of video entry access to all homes, fully lit parking area and 24hr CCTV to external areas.

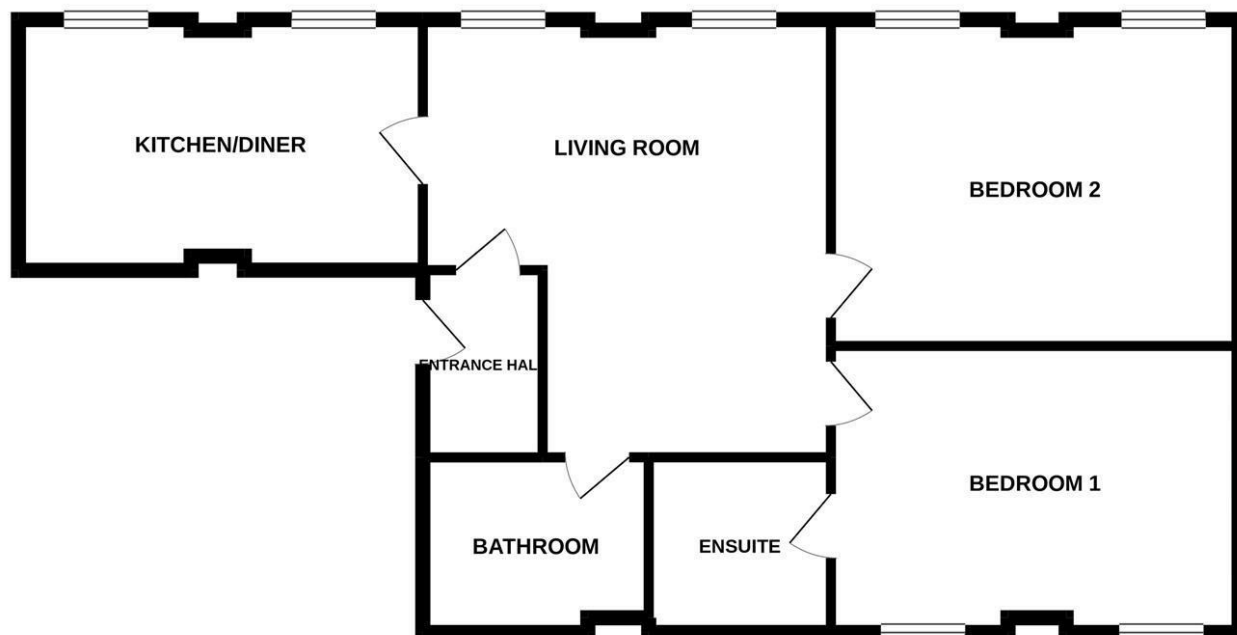
Apartment 3 is on the ground floor and offers a large living room with views over the communal gardens. High ceilings and tall windows provide a superb focal point. This apartment also boasts two double bedrooms, en suite shower room and separate bathroom with fully tiled walls & contemporary white suites.

Rose Court boasts a beautifully designed communal garden, offering residents a serene place to relax & provides a wonderful central focal point. Set within a magnificent setting and stunning views across to Tewkesbury Abbey, The Vineyards and the Cricket Grounds, a location which achieves the rare distinction of being in the heart of a bustling market town, yet offering calm & tranquillity.

Call our office to secure your appointment to view this wonderful development.



GROUND FLOOR



Whilst every attempt has been made to ensure the accuracy of the floorplan contained here, measurements of doors, windows, rooms and any other items are approximate and no responsibility is taken for any error, omission or mis-statement. This plan is for illustrative purposes only and should be used as such by any prospective purchaser. The services, systems and appliances shown have not been tested and no guarantee as to their operability or efficiency can be given.
Made with Metropix ©2022

Living Room

17'1x15'11 (5.21mx4.85m)

Kitchen Dining Room

15'9x9'9 (4.80mx2.97m)

Bedroom 1

15'11x11'2 (4.85mx3.40m)

Bedroom 2

15'11x12'8 (4.85mx3.86m)



Viewing strictly by appointment via Tag Estate Agents – 01684 275 276

Email: info@tagestateagents.co.uk

Agents Note: Room sizes quoted are approximate and should be used for guidance purposes only.

All appliances, fittings or heating systems have not been tested. Buyers are advised to seek verification from their surveyor or legal representative.

P Gregory & V Davis trading as Tag Estate Agents Ltd.